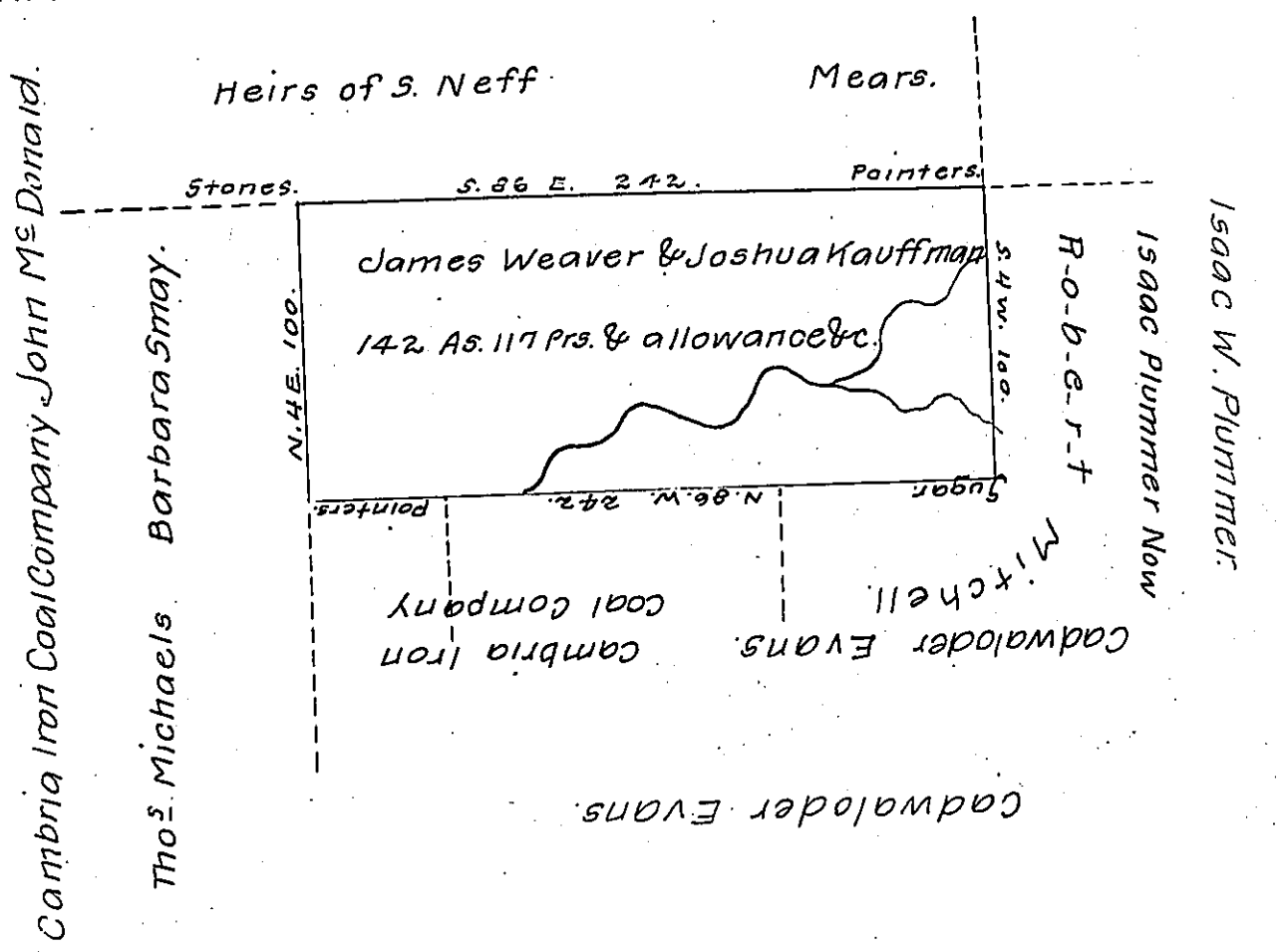


FORM NO. 1.

Michaels & Smay.



Warrant to James Weaver and Joshua Kauffman dated 5th November 1891, calls for Seventy five acres (unimproved) land adjoining lands Isaac W. Plummer on the East, Cadwalader Evans on South, Cambria Iron and Coal Company and John Mc Donald on the West and Michaels and Smay on the North situate in the township of Adams, calls are in red ink on draft, see Certificate below as to where the land surveyed lies, the adjoiners as found in black ink.

A Draft of a tract of land situated in the Township of Summerhill and County of Cambria, containing one hundred forty two acres, 117 perches and allowance of six percent. for roads etc. Surveyed the 19th day of April 1892, in pursuance of a warrant granted to James Weaver & Joshua Kauffman dated the fifth day of November 1891.

To Thomas J. Stewart, Esq.,
Secretary of Internal Affairs

Approved.
Henry Scanlan,
County Surveyor.

IN TESTIMONY that the above is a copy of the original remaining on file in the Department of Internal Affairs of Pennsylvania, made conformably to an Act of Assembly approved the 16th day of February 1833, I have hereunto set my hand and caused the Seal of said Department to be affixed at Harrisburg, this fifteenth day of July, 1907.

Henry Howick
Secretary of Internal Affairs.